

AirSTREAM



По вопросам продаж и поддержки обращайтесь:

Алматы (727)345-47-04
Ангарск (3955)60-70-56
Архангельск (8182)63-90-72
Астрахань (8512)99-46-04
Барнаул (3852)73-04-60
Белгород (4722)40-23-64
Благовещенск (4162)22-76-07
Брянск (4832)59-03-52
Владивосток (423)249-28-31
Владикавказ (8672)28-90-48
Владимир (4922)49-43-18
Волгоград (844)278-03-48
Вологда (8172)26-41-59
Воронеж (473)204-51-73
Екатеринбург (343)384-55-89

Иваново (4932)77-34-06
Ижевск (3412)26-03-58
Иркутск (395)279-98-46
Казань (843)206-01-48
Калининград (4012)72-03-81
Калуга (4842)92-23-67
Кемерово (3842)65-04-62
Киров (8332)68-02-04
Коломна (4966)23-41-49
Кострома (4942)77-07-48
Краснодар (861)203-40-90
Красноярск (391)204-63-61
Курск (4712)77-13-04
Курган (3522)50-90-47
Липецк (4742)52-20-81

Магнитогорск (3519)55-03-13
Москва (495)268-04-70
Мурманск (8152)59-64-93
Набережные Челны (8552)20-53-41
Новокузнецк (3843)20-46-81
Ноябрьск (3496)41-32-12
Новосибирск (383)227-86-73
Омск (3812)21-46-40
Орел (4862)44-53-42
Оренбург (3532)37-68-04
Пенза (8412)22-31-16
Петрозаводск (8142)55-98-37
Псков (8112)59-10-37
Пермь (342)205-81-47

Ростов-на-Дону (863)308-18-15
Рязань (4912)46-61-64
Самара (846)206-03-16
Санкт-Петербург (812)309-46-40
Саратов (845)249-38-78
Севастополь (8692)22-31-93
Саранск (8342)22-96-24
Симферополь (3652)67-13-56
Смоленск (4812)29-41-54
Сочи (862)225-72-31
Ставрополь (8652)20-65-13
Сургут (3462)77-98-35
Сыктывкар (8212)25-95-17
Тамбов (4752)50-40-97
Тверь (4822)63-31-35

Тольятти (8482)63-91-07
Томск (3822)98-41-53
Тула (4872)33-79-87
Тюмень (3452)66-21-18
Ульяновск (8422)24-23-59
Улан-Удэ (3012)59-97-51
Уфа (347)229-48-12
Хабаровск (4212)92-98-04
Чебоксары (8352)28-53-07
Челябинск (351)202-03-61
Череповец (8202)49-02-64
Чита (3022)38-34-83
Якутск (4112)23-90-97
Ярославль (4852)69-52-93

Россия +7(495)268-04-70

Казахстан +7(727)345-47-04

Беларусь +(375)257-127-884

Узбекистан +998(71)205-18-59

Киргизия +996(312)96-26-47

эл.почта: ezd@nt-rt.ru || сайт: <https://lutze.nt-rt.ru/>



Control cabinet wiring

AirSTREAM wiring system works according to a new design principle and stands out thanks to construction and operation benefits!

The high-strength aluminium frames of the AirSTREAM for state-of-the-art control cabinet installation and wiring are very compact because they integrate the wiring trunking into the frame itself. Similar to the original LSC system, the wiring in the AirSTREAM is installed comfortably from the front.

Dispensing with cable trunking allows the compact installation of several components within narrow dimensional constraints. Also, cooling air always circulates the parts and reliably discharges generated heat.

AirSTREAM in detail

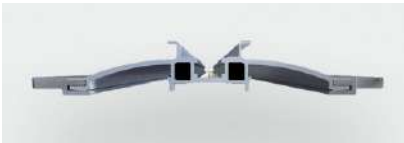
More flexibility thanks to the modular design

AirSTREAM with module parts for individually configurable frames offer unrestricted freedom and flexibility for modern control cabinet construction.

Compatibility to previous systems

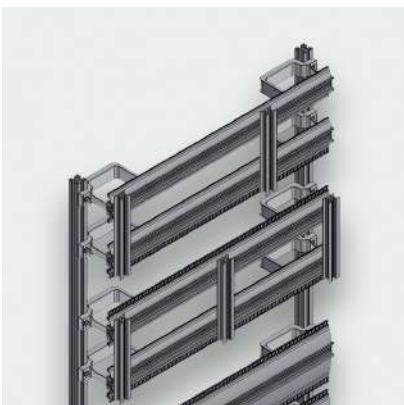
The new AirSTREAM is compatible with the old LSC-B, even existing design plans can be used, without re-design.

Thin profiles – better load-bearing capacity



They provide for 40 % more wiring space in the control cabinet and further reduce the installation space requirements on the basis of their design. Cooling air can circulate more freely. All components can be reached more easily.

Lightweight but sturdy materials



The frame's special profile is not only stronger, it also requires less space. The installation is both lighter and sturdier.

The comb segments that hold the wires are simply clipped to the profile or levered out with a screwdriver, if they need to be exchanged.

The new core structure of the AirSTREAM profiles can also hold heavy components safely and securely. The

mature system of attachment points and shunt rails offers an infinite array of possibilities for installing all components.

Smaller, cooler but spacious

Wiring is much more compact and offers more space for the cores, cable trunking is now superfluous as the wiring level is already integrated into the frame via the thinner profiles or the installed bracket. In this way intelligent air circulation is realised that specifically avoid build-ups of dissipating heat.



This effect, which has many benefits, is achieved by dividing the cabinet into a structural level and a wiring level. This means that the air can flow almost without restriction past all the modules and wire cores. The benefits: dissipated heat is reliably discharged, which in turn means that less cooling output is required. Resources are conserved and costs reduced!

AirSTREAM component attachment

All components can also be attached in the LÜTZE AirSTREAM as usual to the DIN rail or with screws. No boreholes are required thanks to the integrated attachment equipment. All components can be freely positioned and attached as required. Your benefit: Thanks to the AirSTREAM you are very flexible in terms of design and subsequent retrofitting.

LÜTZE supplies the rails of the AirSTREAM in different heights. We always recommend selecting components that are the same height or smaller than the rails to which they are mounted. The combs should not be covered. Components can be generally sorted according to size to optimise the strip sizes; this saves time and material costs.

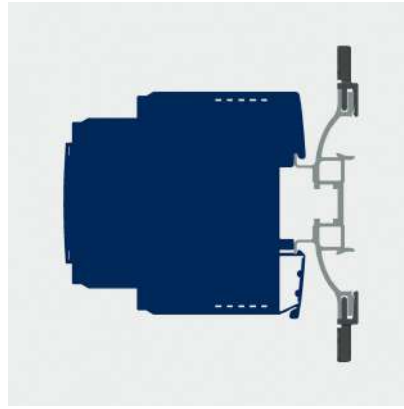


Secure attachment of DIN components

DIN components can be connected simply to the 35 mm HS rail via a clip mechanism. The respective components should be the same size or smaller than the

profile so that the wiring comb is not covered.

Even asymmetrical components can be easily mounted to the HA profile. The only factor to be considered during planning and frame installation is whether the long limb should be installed at the top or bottom.

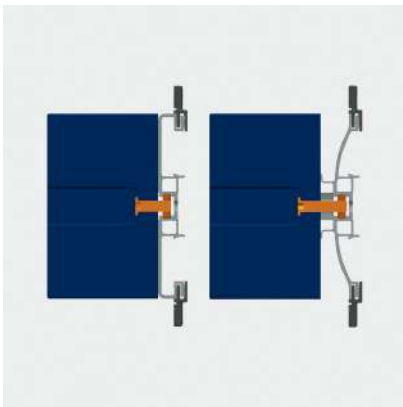


Symmetrical

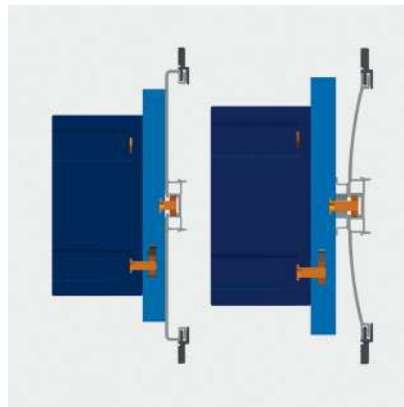


Asymmetrical

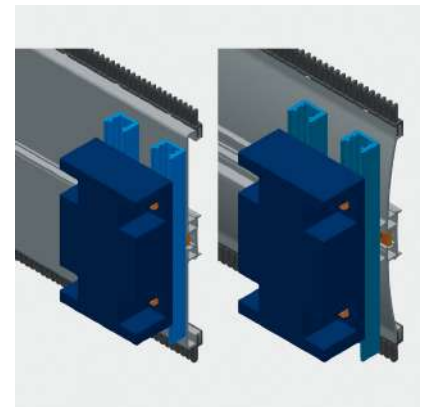
Screw attachment on a profile and via shunt modules



Components with attachment boreholes can be screwed to the profile with a suitably sized screw and sliding nut.



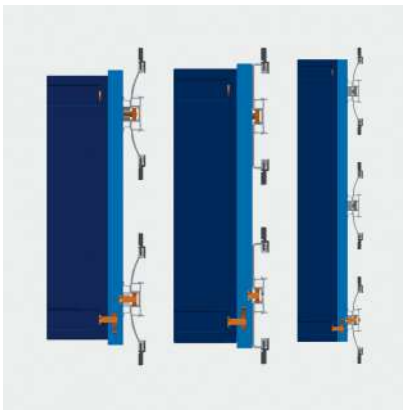
Alternatively, the LÜTZE HS profile can also be used. This solution stands out especially for components next to which other DIN components need to be mounted.



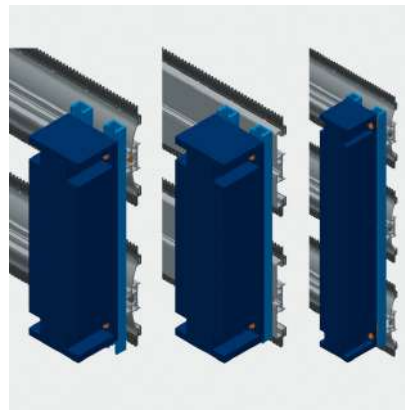
In the case of components with several attachment holes, we recommend using two shunt modules for installation. These are attached via a central

screw onto the HS or MS strip. These shunt profiles form a vertical channel to hold two or more sliding nuts.

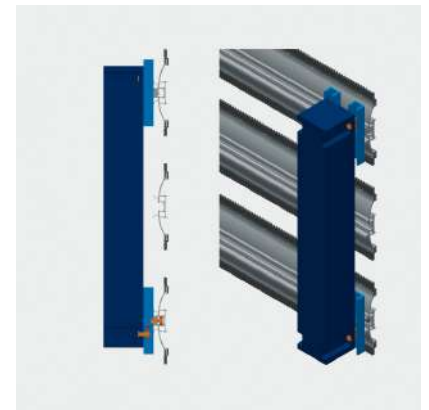
Assembly when there are several attachment boreholes



In the case of components that have several vertical attachment boreholes, the LÜTZE AirSTREAM shunt profile modules can also be attached over several profile. Normally, they are securely attached on the upper and lower profile.



The stability can be improved by also attaching the shunt module to the middle profiles.



In the case of lightweight multi-profile components, we recommend using smaller shunt modules. They are attached directly to the profiles and offer a shunt option across the entire height of the profile. In turn, this means that components can be positioned even more precisely.

AirSTREAM assembly

Pre-assembled or self-assembly

We can supply the standard frame models or customer-specific designs completely assembled. As an additional option, all rails as modules are also available for final assembly in-house.

Pre-assembled, makes your work more flexible

The modular AirSTREAM offers an infinite number of possibilities. The selected, preassembled modules give you unrestricted freedom and flexibility when designing your control cabinet. The assembly is a simple 5-step process.



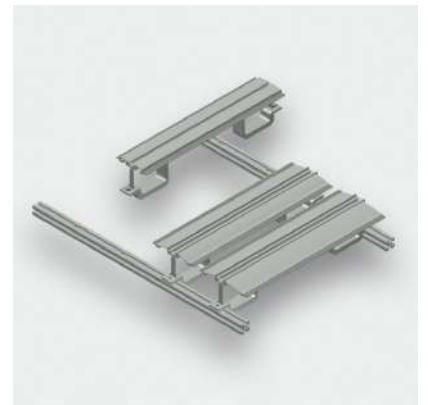
Step 1:

Arrange the two vertical VPSym profiles so that they are parallel and at a right angle to the work surface. The outer dimensions correspond to the required frame width.



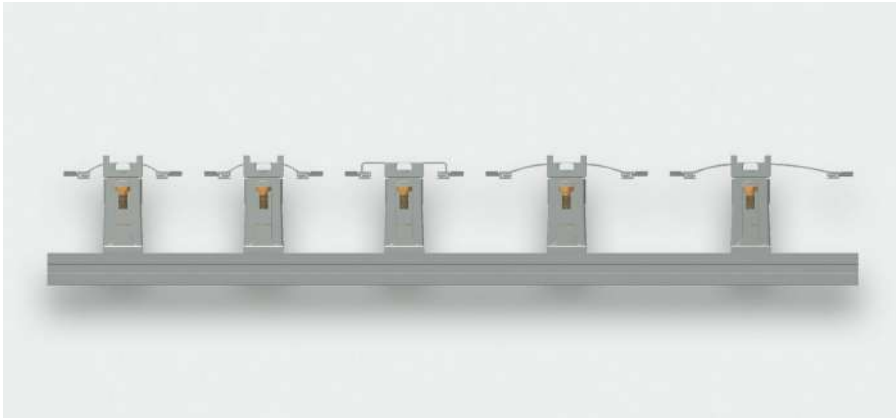
Step 2:

Insert the sliding nuts into the VPSym profiles and then select the approximate places where the modules will be mounted later.



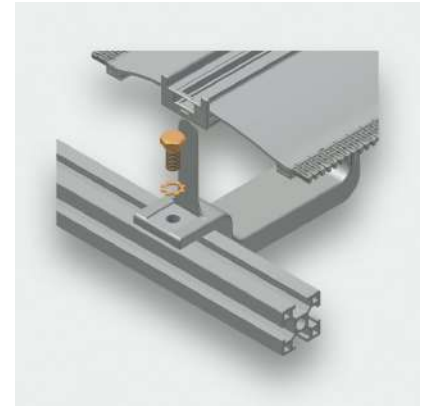
Step 3:

Position all modules in their designated places, place them on the sliding nuts and align them.



Step 4:

Check the clearances when aligning the modules.
Normally, the clearance between the rails is 50 mm, i.e. without combs. Also check the clearances at the top and bottom at the end of the frame.



Step 5:

Now attach all modules with toothed washers and screws. Ensure that the screws are tightened with the stipulated torque of 10 Nm.



Frame installation in the control cabinet with AirSTREAM

The frame can now be installed inside the control cabinet using the matching attachment sets for all standard control cabinet types from the LÜTZE accessories program. It is up to you whether to configure and wire the frame inside or outside the control cabinet.



6-point attachment for a secure hold

Normally the frame is attached at 6 points in the control cabinet with the matching LÜTZE accessories sets.

Accessories for LÜTZE AirSTREAM



AirBLADES

AirBLADES serve to direct the current of air within the control cabinet. They can be installed in a grid of 50 mm instead of a comb and direct the air current from the rear side of the AirSTREAM frame to the front ensuring that all the devices lie within the air current.



AirBLOWER

The AirBLOWER is a control cabinet fan for LÜTZE AirSTREAM wiring system. The AirBLOWER is able to homogenise the climate inside the control cabinet very quickly and reliably. The use of an AirBLOWER and the associated AirBLADES ensures that hotspots inside the control cabinet are avoided reliably.

Also, if an AirBLOWER is installed, any additional climate control units only need to be activated when necessary. The AirBLOWER and climate



Cable clamp module

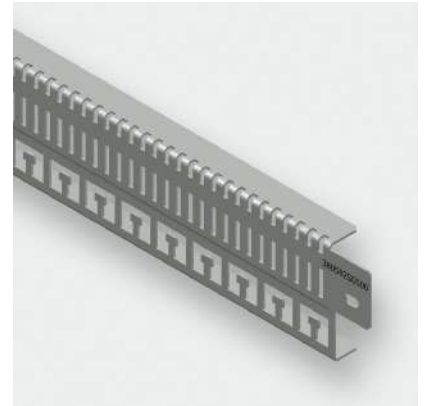
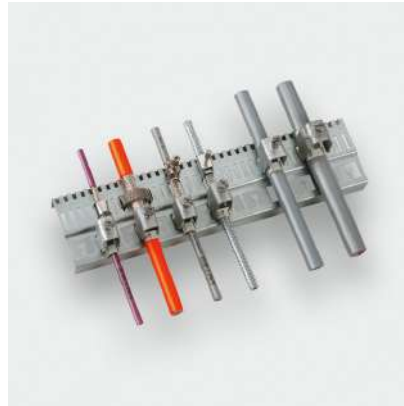
The cable clamp module is screwed directly to the vertical profile and serves to clamp the cables with cable clips. Reliable strength and secure assembly are also fundamental principles of the AirSTREAM.

control units work hand-in-hand to ensure more efficiency inside the control cabinet.

EMC module

The EMC module can be screwed to the vertical profiles. The stripped shields within the contact area are connected extensively to the EMC module with clips or metal cable ties.

Also, cable ties can be mounted to the moulded recesses to affix the insulation or cable clamping clips for strain relief. It is also possible to attach strain relief elements to both sides above the insulation sheath of the cable.



Shunt rail module RG020

The shunt profile module RG020 serves

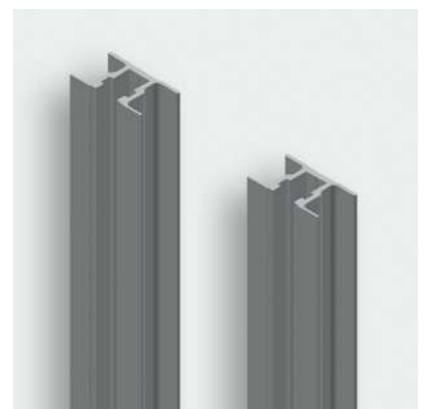
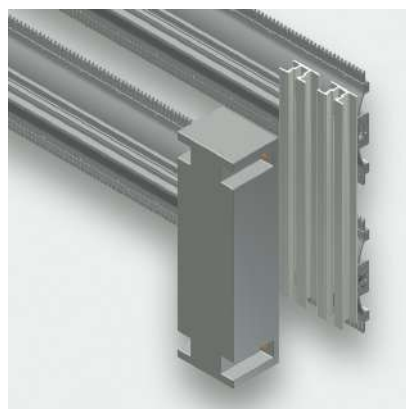
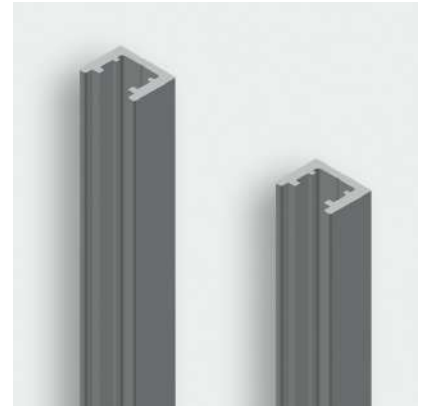
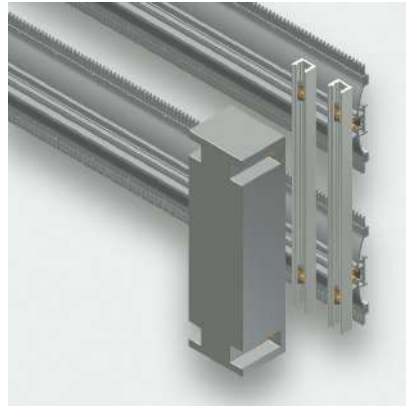
the vertical attachment of devices via a sliding nut channel. It can be simply attached via the sliding nut channel of the profile modules.

The shunt profiles in the lengths 80 mm, 100 mm and 120 mm each have a central borehole and can be simply attached in the sliding nut channel of the profile modules.

The shunt profile module is made of two shunt profiles of the same length. You have a range of sliding nuts, sliding nut cages and screws from the LÜTZE accessories program at your disposal to attach the shunt profiles.

Shunt rail module RG035

The shunt profile module RG035 is used to attach devices vertically via a sliding nut channel. The shunt profile module can be



simply mounted via the sliding nut channel of the shunt profile. The shunt profile, length 100 mm, has a central borehole and can also be easily affixed in the sliding nut channel of the shunt profile module.

The shunt profile module is made of two shunt profiles of the same length. The larger contact surface of the RG035 profiles improves the EMC connection of the mounted devices. You have a range of sliding nuts, sliding nut cages and screws from the LÜTZE accessories program at your disposal to attach the shunt profiles.

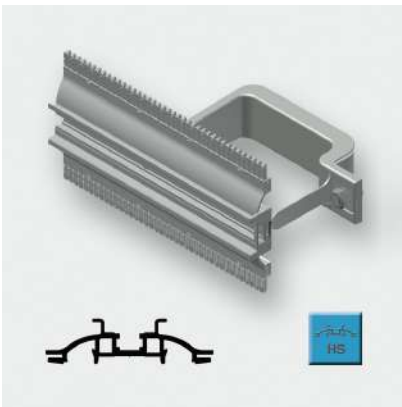
Rail selection

There is a difference between profiles with an integrated DIN HS rail and the MS assembly profiles. All profiles have an integrated groove for the sliding nuts and screws.

This means that the AirSTREAM is highly flexible in terms of attachment possibilities and guarantees easier assembly.

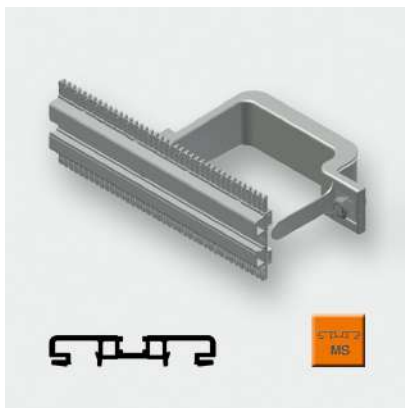
There are four different rail categories available, and each one is optimized for a specific purpose.

Dinrail profiles strip HS module



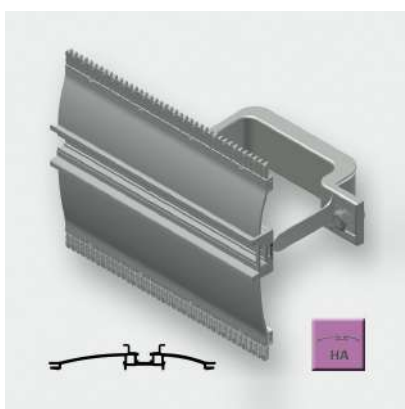
- The standard HS module serves the attachment of hat profile-suitable devices.
- Screw attachment without drilling allows integration of the sliding nut channel.
- The dinrail profile module comprises a strip with a 7.5 mm high and 35 mm wide dinrail profile with sliding nut channel, standard combs, two assembly brackets, including insulation, and edge protection.
- The HS module is available in the following heights 40, 60, 80, 100, 120, 140 and 160 mm.

Installation strip MS module



- The standard MS module serves to install devices onto smooth surfaces via a sliding nut channel.
- The module has a symmetrically arranged sliding nut channel, standard combs, two assembly brackets, incl. insulation, and edge protection.
- The MS module is available in the following heights: 40, 80, 100, 120 and 180 mm.

Dinrail profiles strip asymmetrical HA module



- The standard HA module serves the attachment of dinrail profile-suitable devices with dinrail profile attachments that are asymmetrical to the casing.
- The dinrail profile module HA comprises a strip with a 7.5 mm high and 35 mm wide dinrail profile with sliding nut channel, standard combs, two assembly brackets, including insulation, and edge protection.
- The HA module is available in the following heights: 140 and 160 mm.

Installation strip asymmetrical MA module



- The standard MA module serves the attachment of devices without hat profiles.
- The module comprises a smooth profile and has two asymmetrically arranged sliding nut channels, standard combs, two assembly brackets, including insulation, and edge protection.
- The MA module is available in a height of 80 mm.

AirSTREAM in the EPLAN Data Portal

The LÜTZE AirSTREAM wiring system is available in the EPLAN Data Portal. The Engineering of all AirSTREAM standard modules can be simplified.

The integration of the LÜTZE AirSTREAM wiring system into EPLAN Data Portal is of great benefit to designers of interdisciplinary engineering tools: Project planning, 3D layout, production and assembly of an AirSTREAM wiring frame are merged into one uniform data base that enable standardised procedures, automatic processes and continuous workflows. Part updates are carried out automatically via the EPLAN Data Portal.

As a result, the design times for a LÜTZE AirSTREAM frame are minimised allowing products to be launched much faster.



Technical data sheet

AirSTREAM, 700-750-1898-085



Identification

Type	AirSTREAM, 700-750-1898-085
Part No.	350000F0000

Product version

Datasheet version	00
-------------------	----

Use/Application/Properties

Application	<ul style="list-style-type: none">Configured <i>Air</i>STREAM SR032 wiring system
-------------	--

General

PU	1
----	---

Technical data sheet

AirSTREAM Compact, 700x750



Identification

Type AirSTREAM Compact, 500x690
Part No. [360473F0000](#)

Product version

Datasheet version 00

Use/Application/Properties

Application • Configured *Air***STREAM** Compact wiring system

General

PU 1

Technical data sheet

AirSTREAM, 700-750-1898-085



Identification

Type	AirSTREAM, 700-750-1880-085
Part No.	387266F0000

Product version

Datasheet version	00
-------------------	----

Use/Application/Properties

Application	<ul style="list-style-type: none">Configured <i>Air</i>STREAM VPSym wiring system
-------------	--

General

PU	1
----	---

По вопросам продаж и поддержки обращайтесь:

Алматы (727)345-47-04
Ангарск (3955)60-70-56
Архангельск (8182)63-90-72
Астрахань (8512)99-46-04
Барнаул (3852)73-04-60
Белгород (4722)40-23-64
Благовещенск (4162)22-76-07
Брянск (4832)59-03-52
Владивосток (423)249-28-31
Владикавказ (8672)28-90-48
Владимир (4922)49-43-18
Волгоград (844)278-03-48
Вологда (8172)26-41-59
Воронеж (473)204-51-73
Екатеринбург (343)384-55-89

Иваново (4932)77-34-06
Ижевск (3412)26-03-58
Иркутск (395)279-98-46
Казань (843)206-01-48
Калининград (4012)72-03-81
Калуга (4842)92-23-67
Кемерово (3842)65-04-62
Киров (8332)68-02-04
Коломна (4966)23-41-49
Кострома (4942)77-07-48
Краснодар (861)203-40-90
Красноярск (391)204-63-61
Курск (4712)77-13-04
Курган (3522)50-90-47
Липецк (4742)52-20-81

Магнитогорск (3519)55-03-13
Москва (495)268-04-70
Мурманск (8152)59-64-93
Набережные Челны (8552)20-53-41
Новокузнецк (3843)20-46-81
Ноябрьск (3496)41-32-12
Новосибирск (383)227-86-73
Омск (3812)21-46-40
Орел (4862)44-53-42
Оренбург (3532)37-68-04
Пенза (8412)22-31-16
Петрозаводск (8142)55-98-37
Псков (8112)59-10-37
Пермь (342)205-81-47

Ростов-на-Дону (863)308-18-15
Рязань (4912)46-61-64
Самара (846)206-03-16
Санкт-Петербург (812)309-46-40
Саратов (845)249-38-78
Севастополь (8692)22-31-93
Саранск (8342)22-96-24
Симферополь (3652)67-13-56
Смоленск (4812)29-41-54
Сочи (862)225-72-31
Ставрополь (8652)20-65-13
Сургут (3462)77-98-35
Сыктывкар (8212)25-95-17
Тамбов (4752)50-40-97
Тверь (4822)63-31-35

Тольятти (8482)63-91-07
Томск (3822)98-41-53
Тула (4872)33-79-87
Тюмень (3452)66-21-18
Ульяновск (8422)24-23-59
Улан-Удэ (3012)59-97-51
Уфа (347)229-48-12
Хабаровск (4212)92-98-04
Чебоксары (8352)28-53-07
Челябинск (351)202-03-61
Череповец (8202)49-02-64
Чита (3022)38-34-83
Якутск (4112)23-90-97
Ярославль (4852)69-52-93

Россия +7(495)268-04-70

Казахстан +7(727)345-47-04

Беларусь +(375)257-127-884

Узбекистан +998(71)205-18-59

Киргизия +996(312)96-26-47

эл.почта: ezd@nt-rt.ru || сайт: <https://lutze.nt-rt.ru/>